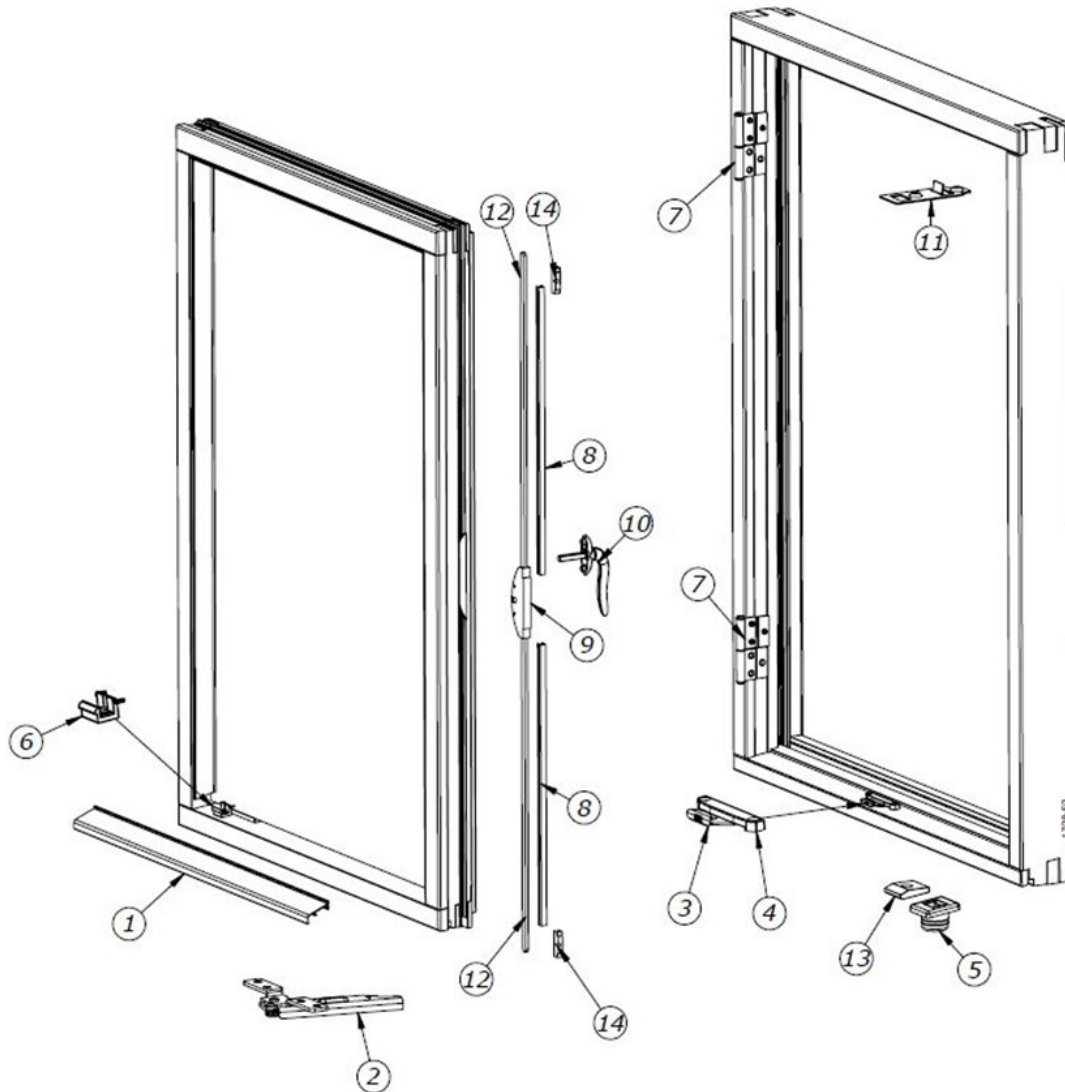


SPIILKA SIDE-HUNG

Profile design and Fitting instructions

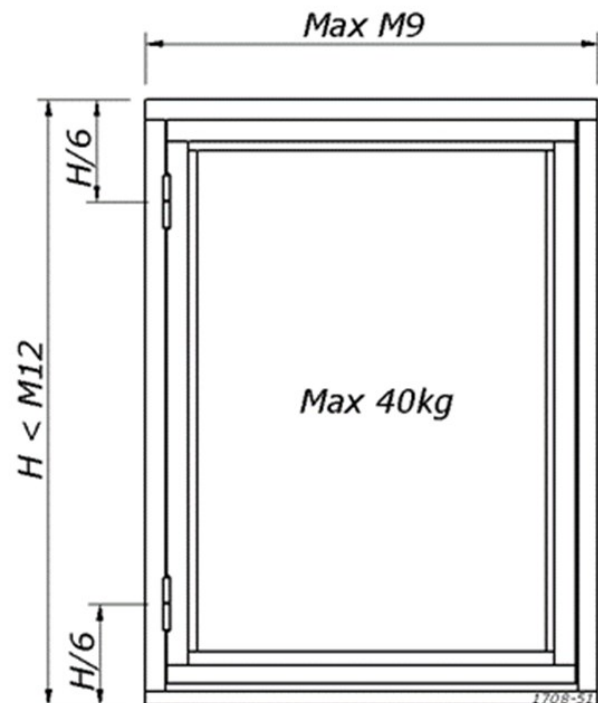
Updated: 02.01.2024



Item	Components, frame	Item	Components, sash
1	GLAZING BEAD	8	COVER CAP PP WHITE
2	SAFETY CATCH	9	LOCKBOX
3	KEEPER FOR CATCH	10	HANDLE
4	GUIDE FOR KEEP, SEPARATE	11	END KEEP TOP
5	END KEEP BOTTOM	12	ESPAÑOLETTE RODS
6	CLIPS FOR GLAZING BEAD	13	GUIDING WEDGE
7	SIDE HUNG HINGES	14	ESPAÑ. GUIDE

This installation guide is intended to be a guide and adjustments may be done by the window manufacturer.

MEASUREMENTS



DIMENSIONS AND WEIGHTS

Minimum frame depth ca 70 mm

Max window height 1188 mm

Max window width 888 mm

Max sash weight 50kg

Hinges

There are 3 variations of the hinges, flat plated with 'control collars', cranked plate with 'control collars' and cranked plate without 'control collars'.

Both alternatives with 'control collars' needs pre drilled counter bore, please see attached explanation and drawings.

These 'control collars' makes it easier to attach the hinges to the window, as well as strengthen the connection between the hinge and profile.

Material and colours

The hinges are supplied in white (RAL 9010), grey (RAL 7004) and black (RAL 9011).

Treatment is done based on requirements for EN 1670 Class 3.

Material:

Hinges—steel

Pin—brass

Ends—durable plastic material

End caps:

There is two options of ends to the hinges, either a flat end cap or a decorative knob. Both ends are simple to remove or replace if required.

The ends are both produced in a durable plastic material.

Assembly

For sash weight up to 40 kg two hinges are sufficient. For windows with sash weight up to 50 kg three hinges are required.

Maximum width of the window is M9, or up to 888 mm.

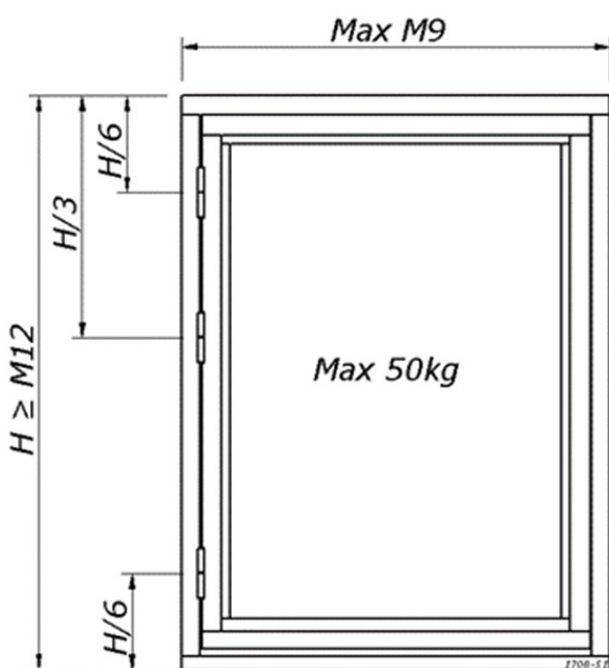
Matching screws for attaching the hinges is $\varnothing 4,5 \times 30$ mm.

Hinges with 'control collars' requires pre drilled counter bore to fit the collars. For details please see drawings attached.

Sash/frame gaps

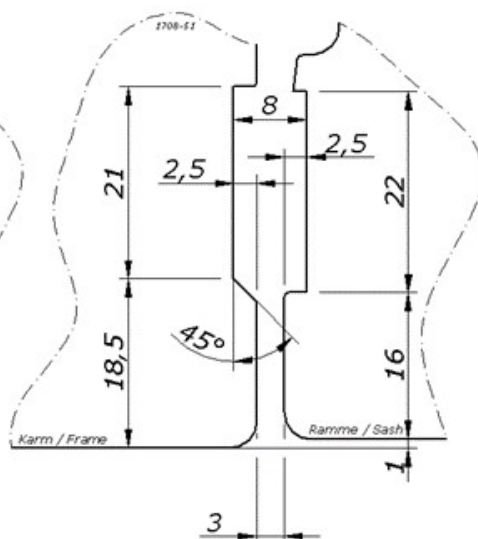
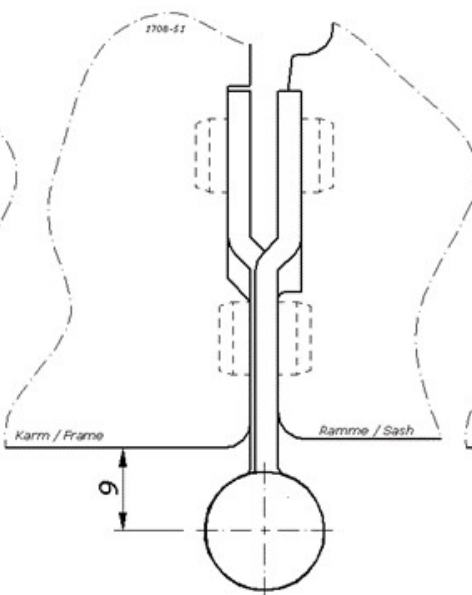
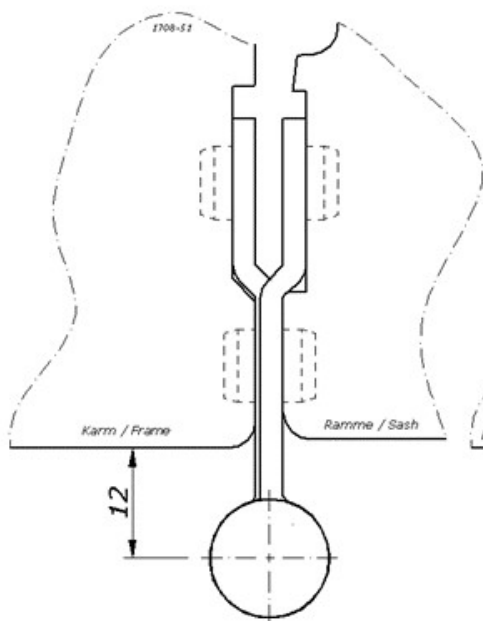
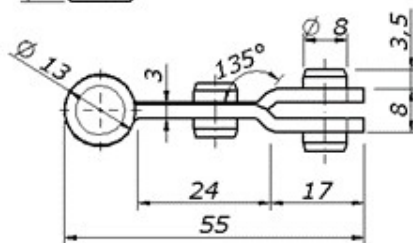
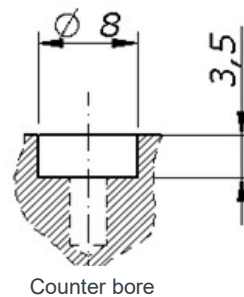
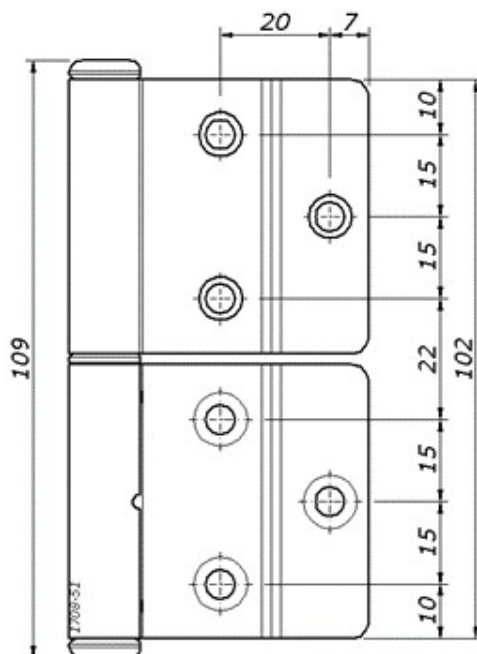
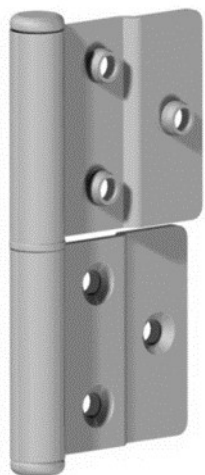
The hinges are developed to fit when the distance between sash and frame is 3 mm on the side of the profile.

Detailed drawings attached on page 3 - 5.



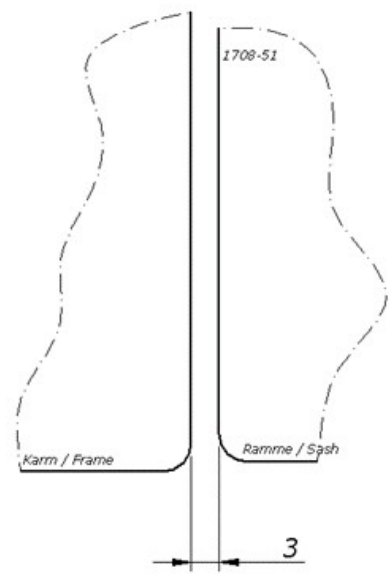
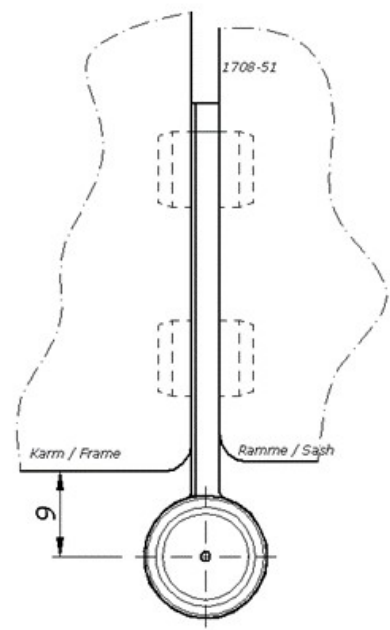
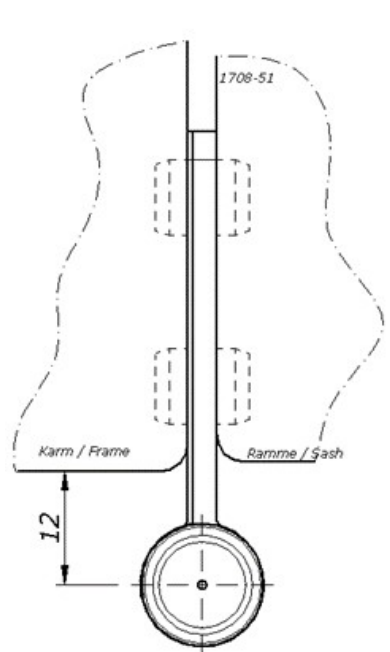
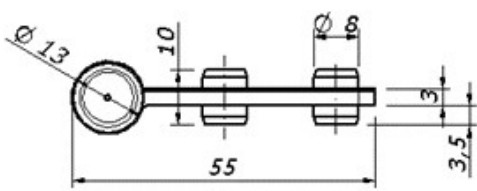
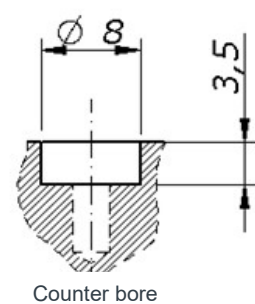
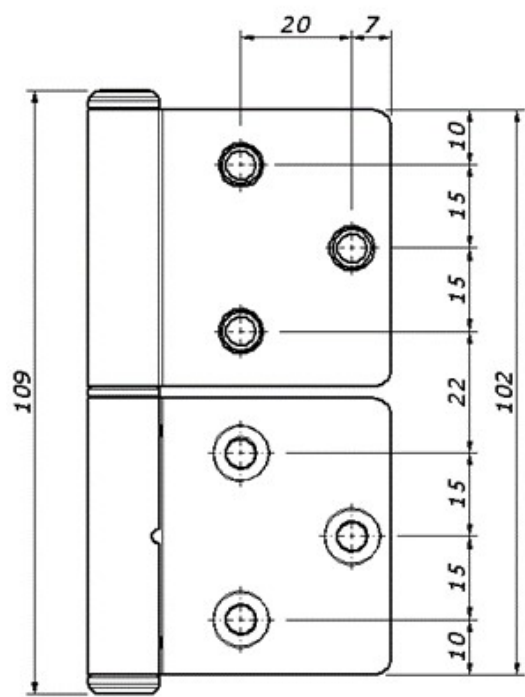
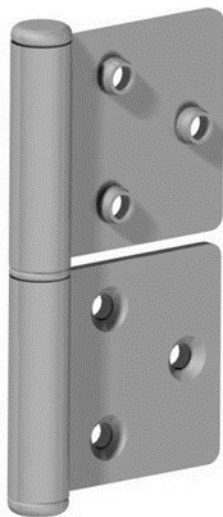
Critical measurements

Cranked plate with 'control collars'



Critical measurements

Flat plate with 'control collars'



Critical measurements

Cranked plate without 'control collars'

